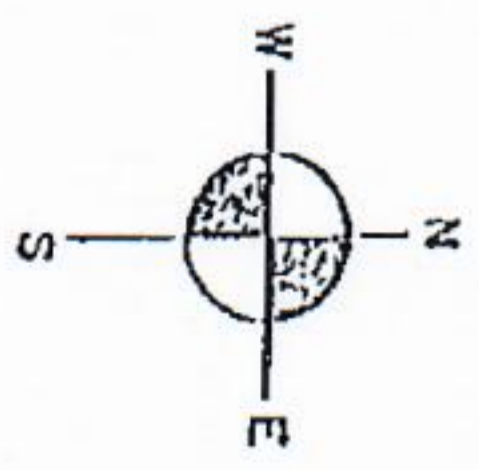


- COUNTY LINE
- CORPORATE LIMITS
- STATE TRUNKLINE
- COUNTY PRIMARY
- COUNTY LOCAL
- AJACENT COUNTY
- CITY OR VILLAGE STREET
- PRIMARY ROAD SYSTEM
- LOCAL ROAD SYSTEM

PRIMARY ROAD SYSTEM 12.33 MI.  
 LOCAL ROAD SYSTEM 43.81 MI.

I HEREBY CERTIFY THAT THE ROADS SHOWN HEREON BY SYMBOL AS PRIMARY ROADS AND LOCAL ROADS ARE IN USE AND ARE UNDER THE JURISDICTION OF THE COUNTY ROAD COMMISSION.

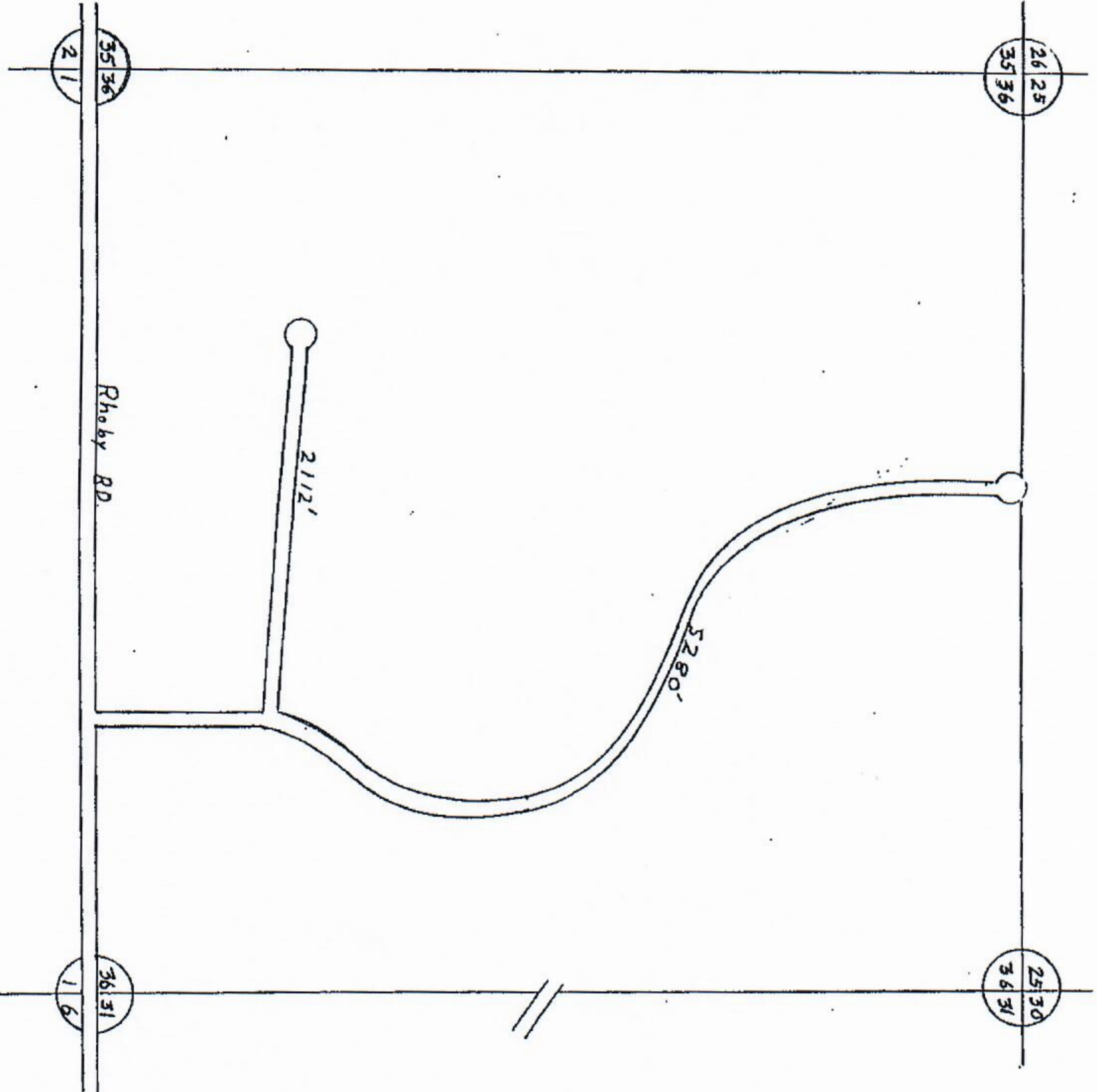


SCALE 0 1/2 1 MILE  
 ONE INCH EQUALS 3000 FT.

PIONEER TWP.  
 T24N-R7W  
 MISSAUKEE COUNTY

13	14	15	16
9	10	11	12
5	6	7	8
1	2	3	4





Trents Subdivision

LEGEND

- COUNTY LINE
- CORPORATE LIMITS
- STATE TRUNKLINE
- COUNTY PRIMARY
- COUNTY LOCAL
- ADJACENT COUNTY
- CITY OR VILLAGE
- STREET

TOTAL FEET 7392. EQUALS 1.4 MILES

I HEREBY CERTIFY THAT THE ROADS SHOWN HEREON BY SYMBOL OR IN GREEN AS LOCAL ROADS ARE IN USE AND ARE UNDER THE JURISDICTION OF THE COUNTY ROAD COMMISSION.

CHAIRMAN \_\_\_\_\_ DATE \_\_\_\_\_



SCALE 0 400 1200 FEET  
One inch equals 400 feet

TOWNSHIP PIONEER  
SECTION 36 T. 24N R. 7W  
COUNTY MISSOURI